

**Recommended set-up of the WWW browser Opera 8.0
for ČSOB Internetbanking 24 service using SMS key**

TABLE OF CONTENTS

1. INSTALLATION OF THE ROOT CERTIFICATE I.CA 3

2. THE STARTING SET-UP OF THE OPERA BROWSER..... 9

3. TROUBLESHOOTING 10

 3.1. ENABLING SSL..... 10

 3.2. ENABLING JAVASCRIPT AND OTHER MINIMUM SETTINGS..... 13

 3.3. COOKIES..... 15

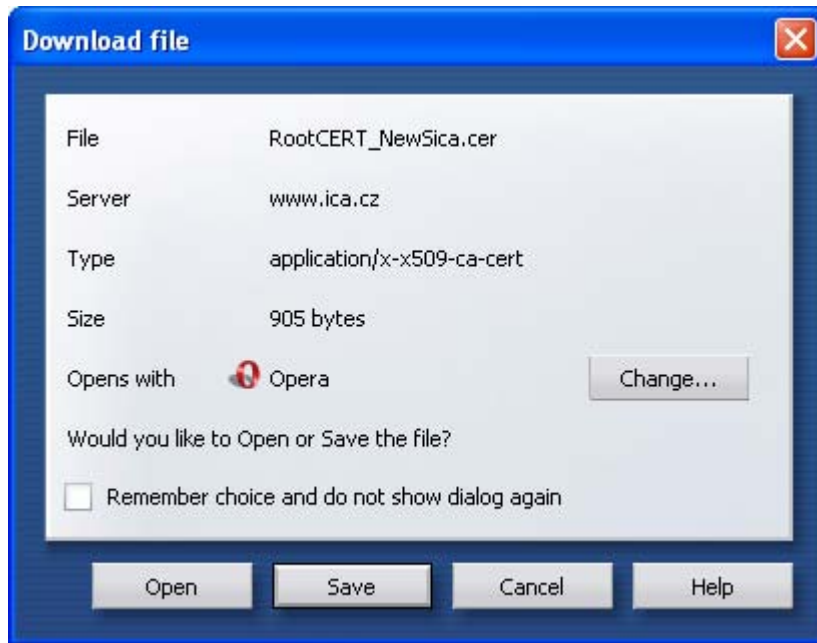
 3.4. ERASING CACHE..... 17

 3.5. IDENTIFICATION OF OPERA 18

1. Installation of the root certificate I.CA

First, please download the root certificate from the address http://www.ica.cz/RootCERT_NewSica.cer

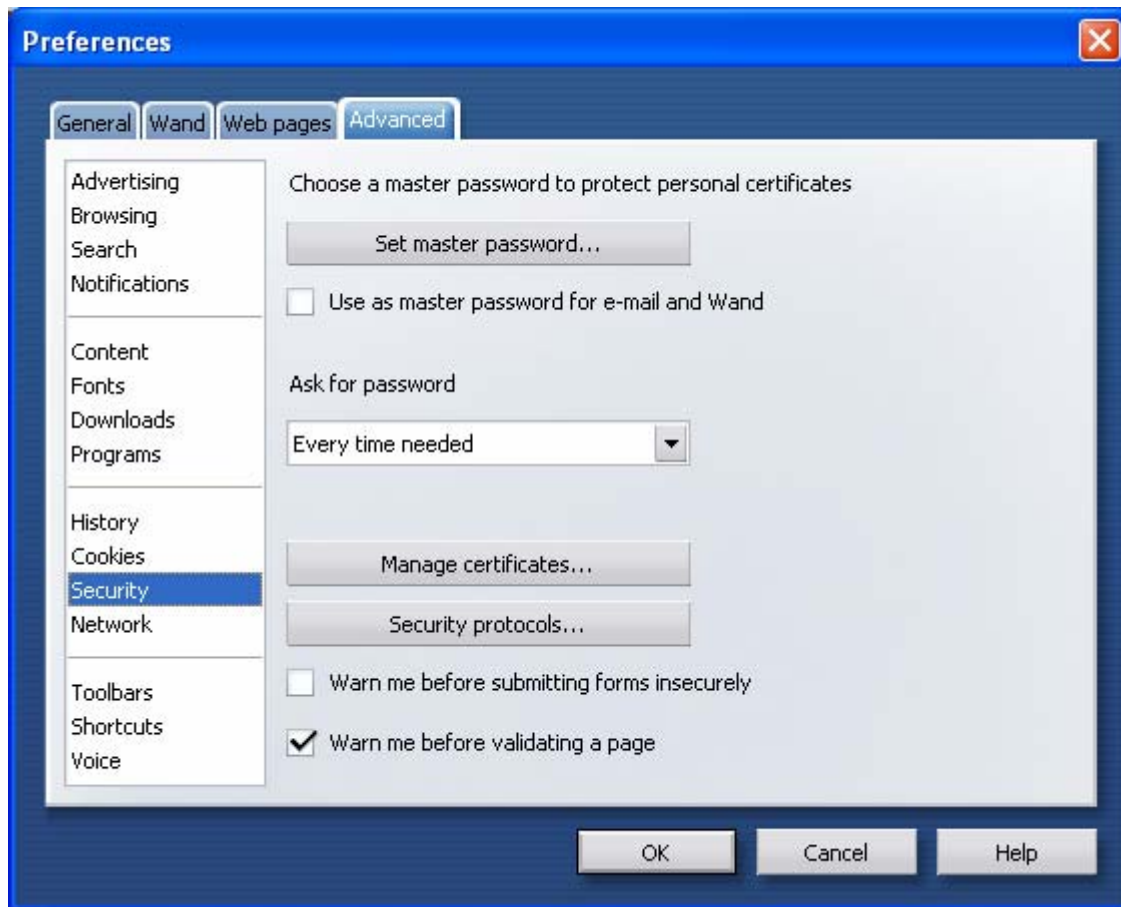
WARNING! To be saved on the disk (Save); do not open it! (Otherwise the import will be made to IE, if available.)



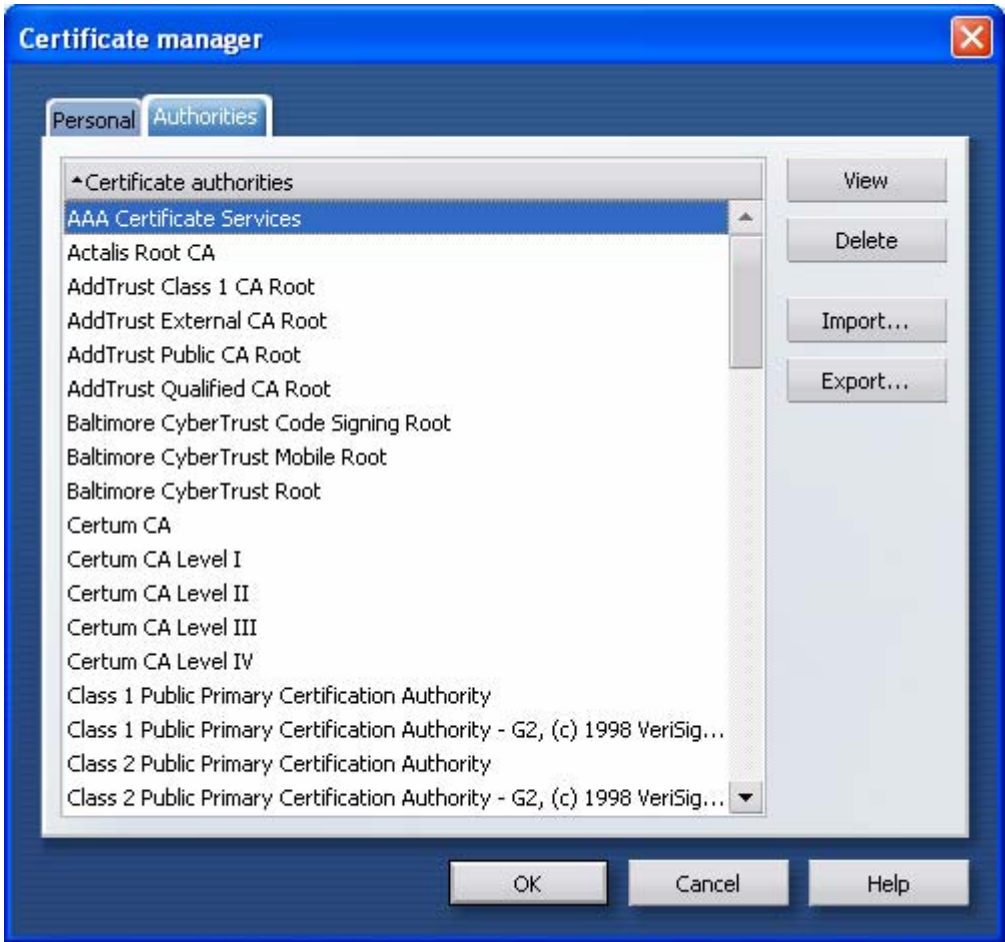
The certificate will be downloaded. We recommend its temporary placing on the desktop.

After that, in browser Opera:

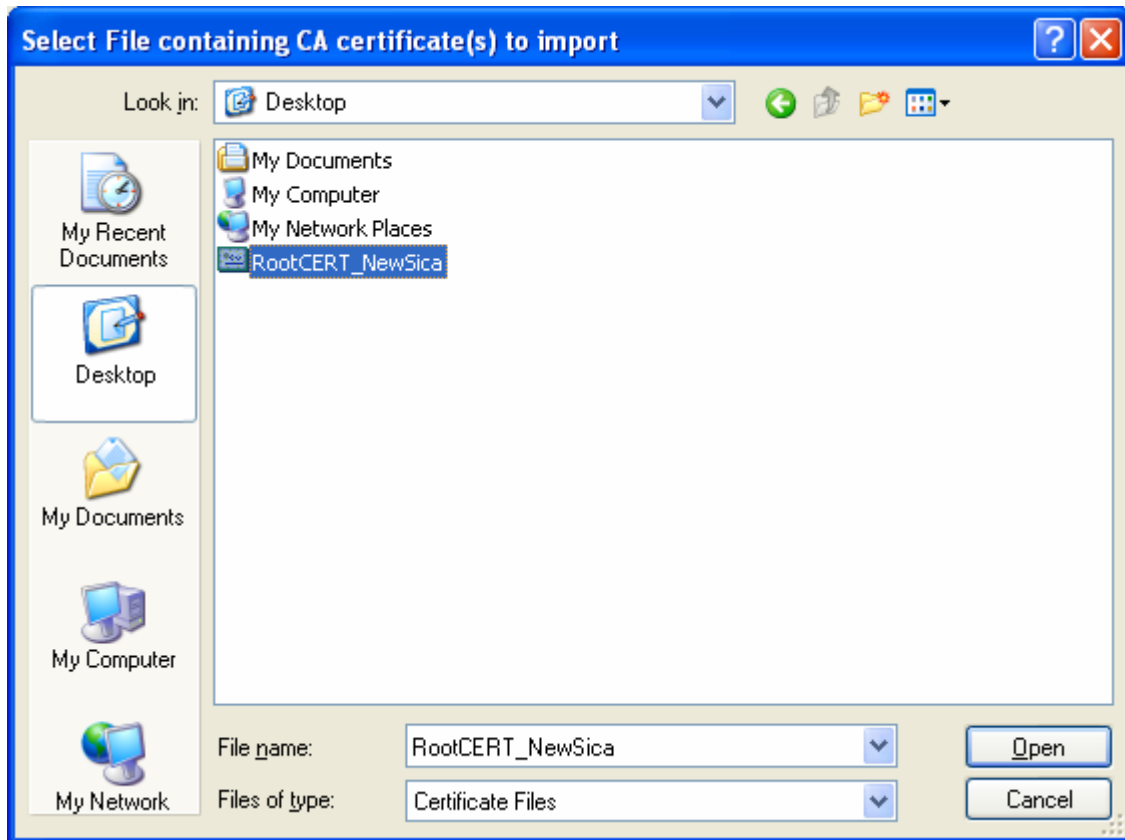
- 1) Menu Tools -> Preferences (or CTRL+F12)
- 2) Security -> Manage certificates



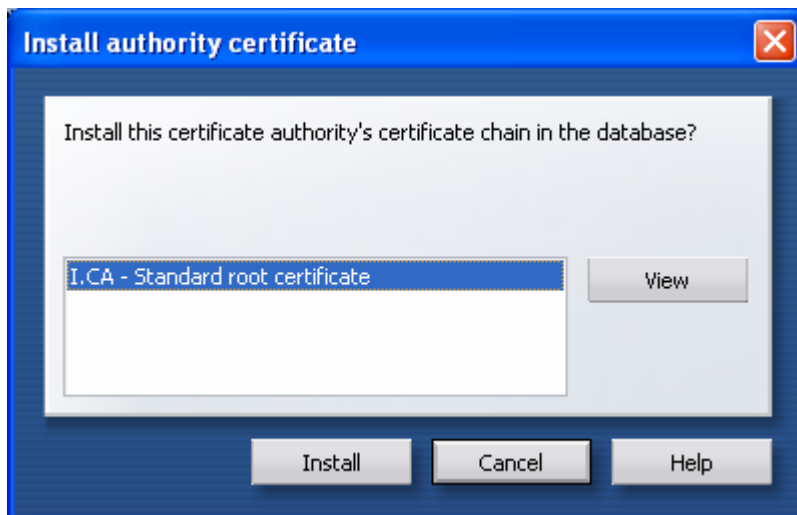
3) Authorities -> Import



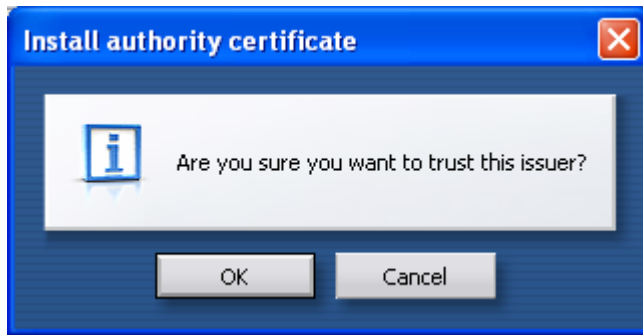
4) From the desktop -> Open



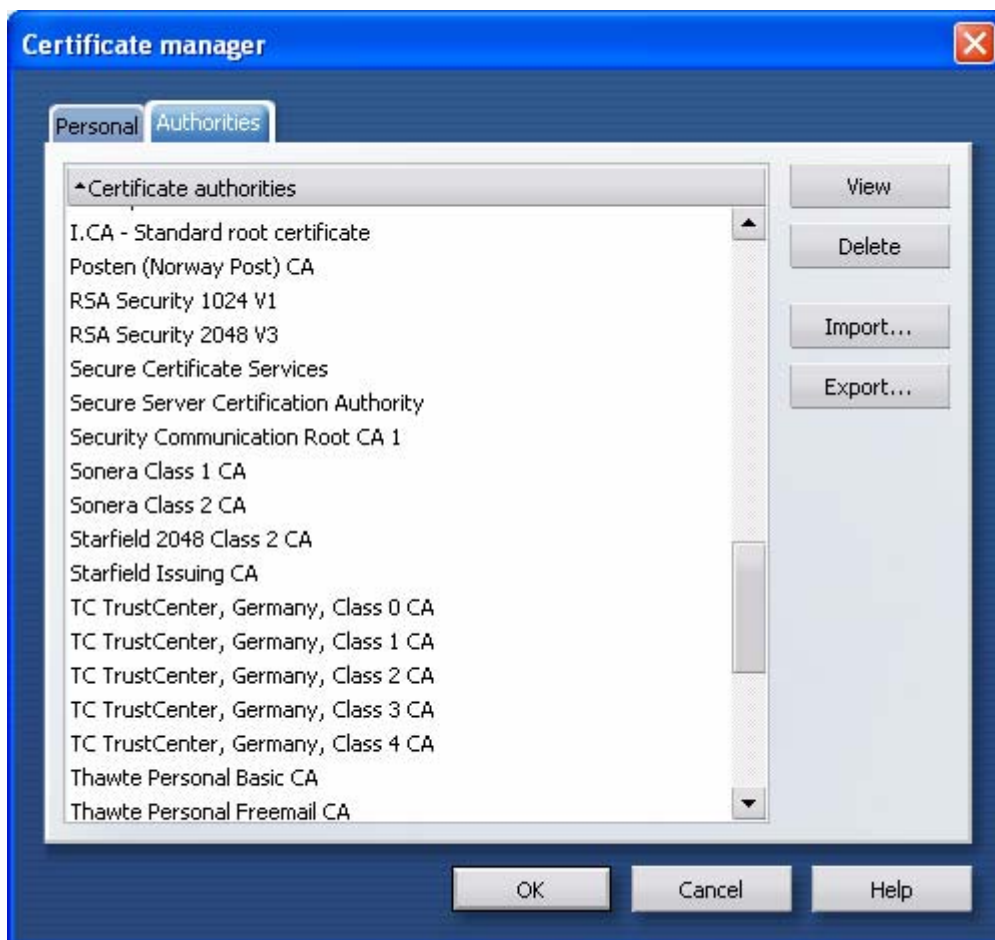
5) Install



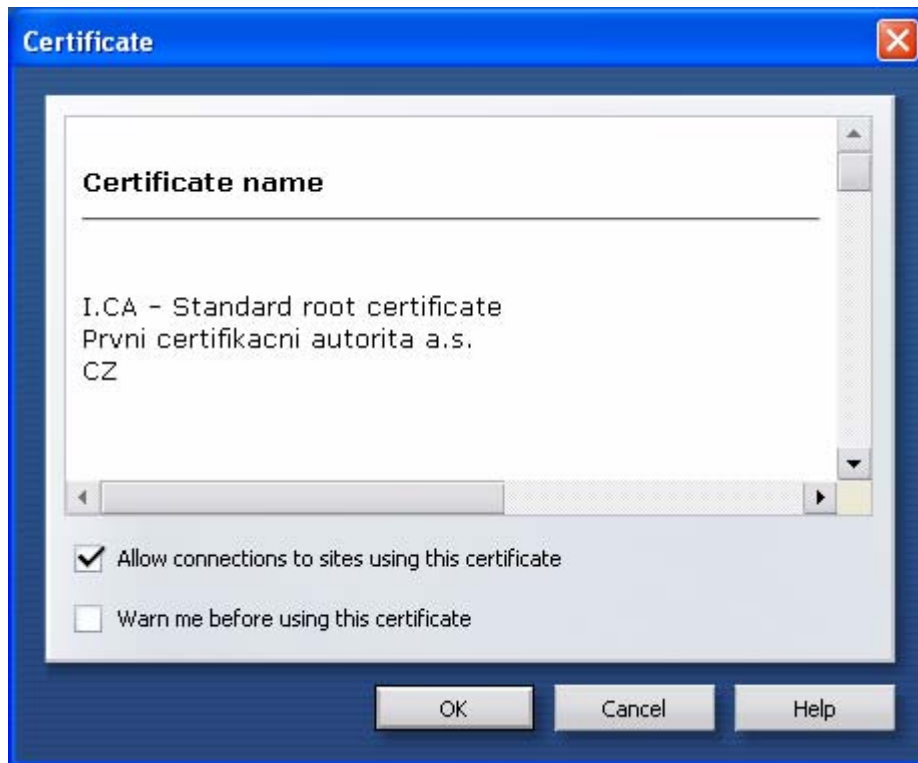
6) OK



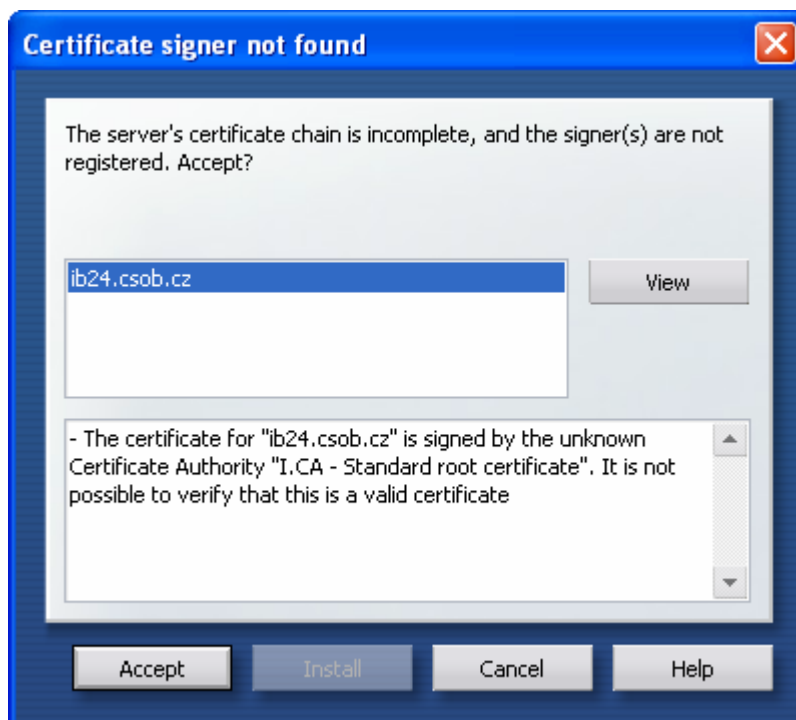
7) The imported certificate will appear in the Authorities tab as *I.CA – Standard root certificate*



- 8) Select *I.CA – Standard root certificate* -> View -> omit (ie do not tick) the box Warn me before using this certificate -> OK



If the certificate is not installed, secured SSL communication will not be used correctly, and a warning, similar to that below, will be displayed when the log-in page of the service is read in:



If the box is ticked, see point 8) /it should not be ticked/, a warning, similar to that below, will be displayed when the log-in page of the service is read in:



2. The starting set-up of the Opera browser

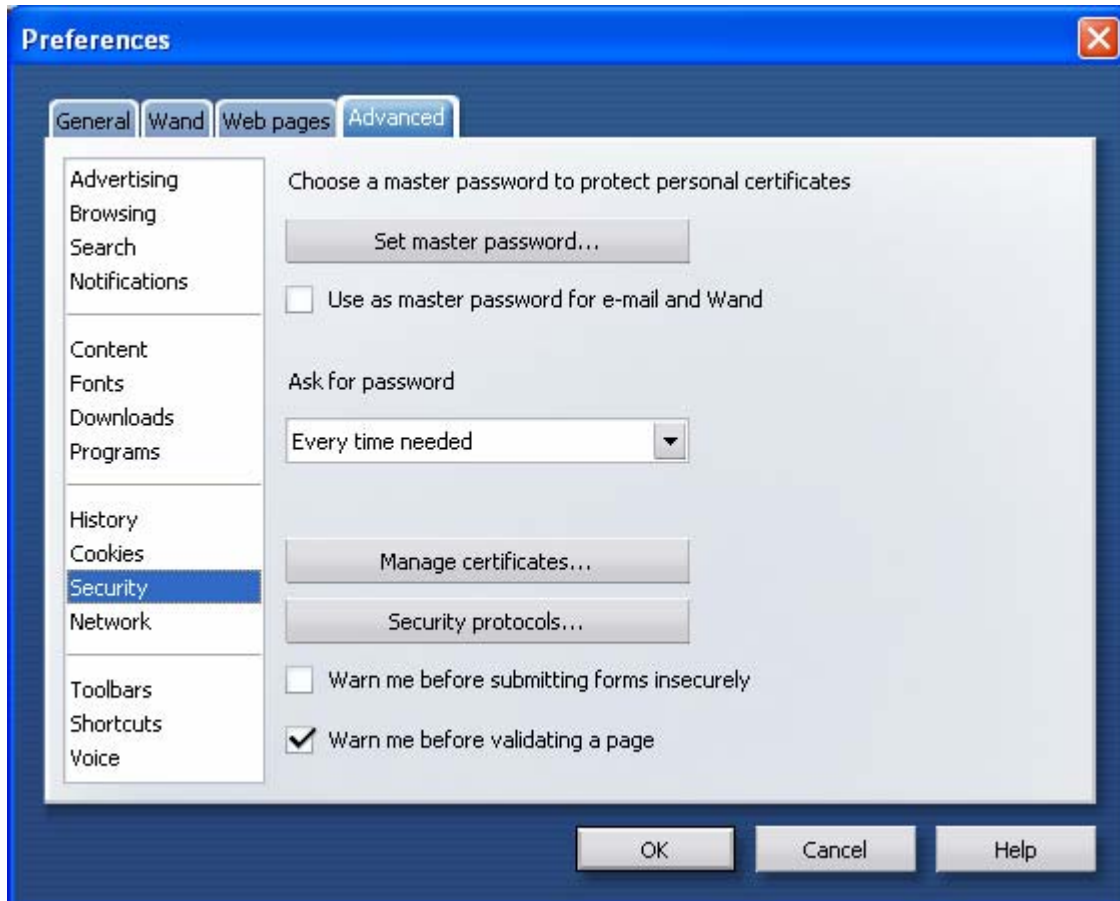
The starting set-up of the Opera browser is appropriate for using ČSOB Internetbanking 24 service when log-in is made through an Identification number + PIN and when active operations are signed with an SMS key.

3. Troubleshooting

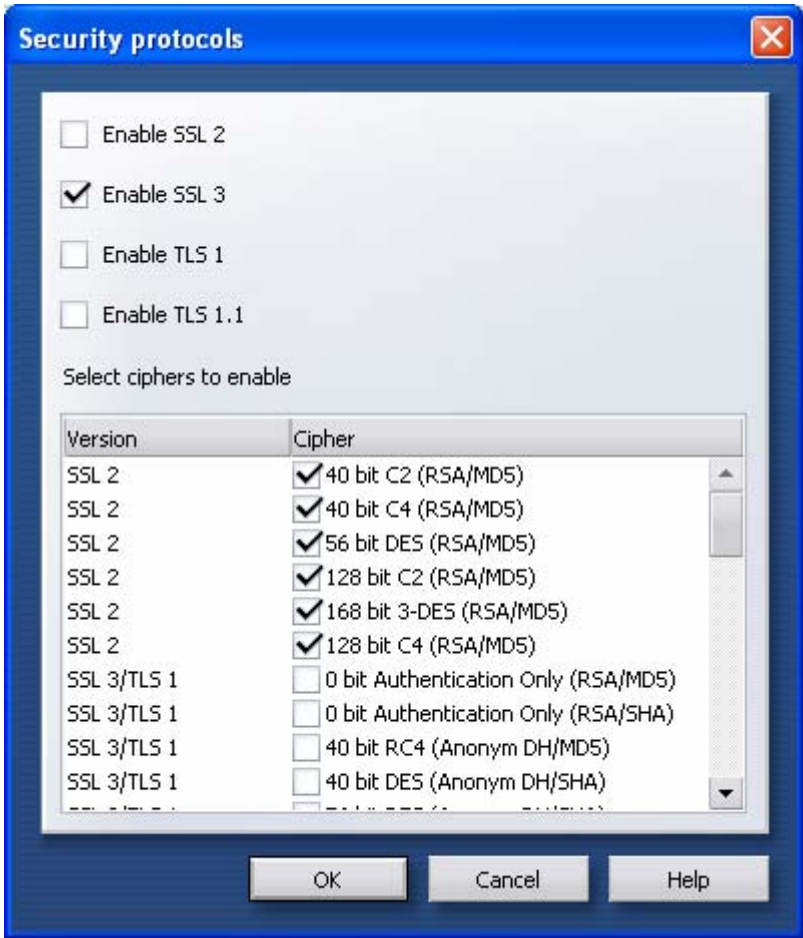
3.1. Enabling SSL

SSL communication must be allowed.

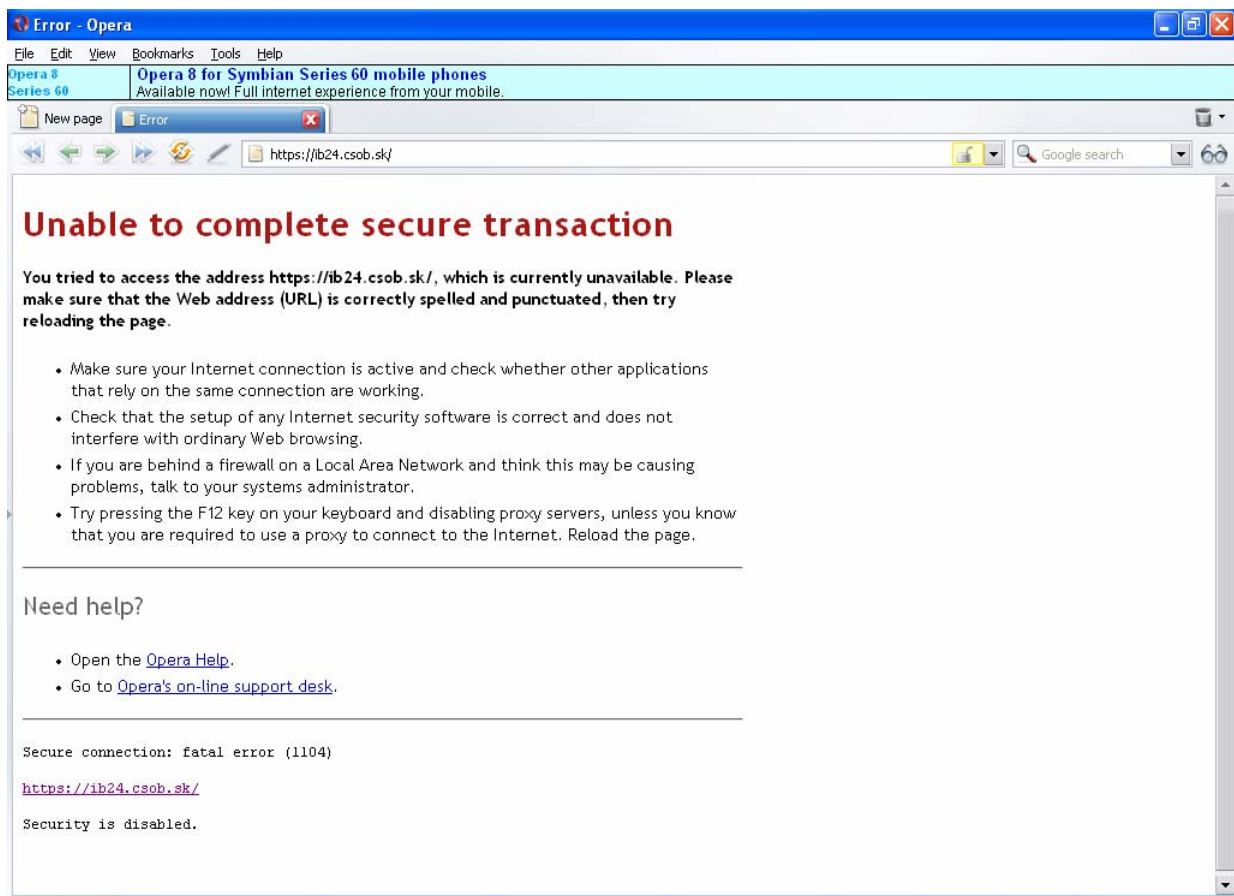
- 1) Menu Tools -> Preferences (or CTRL+F12)
- 2) Advanced - Security -> Security protocols



3) Tick Enable SSL 3.0 -> OK



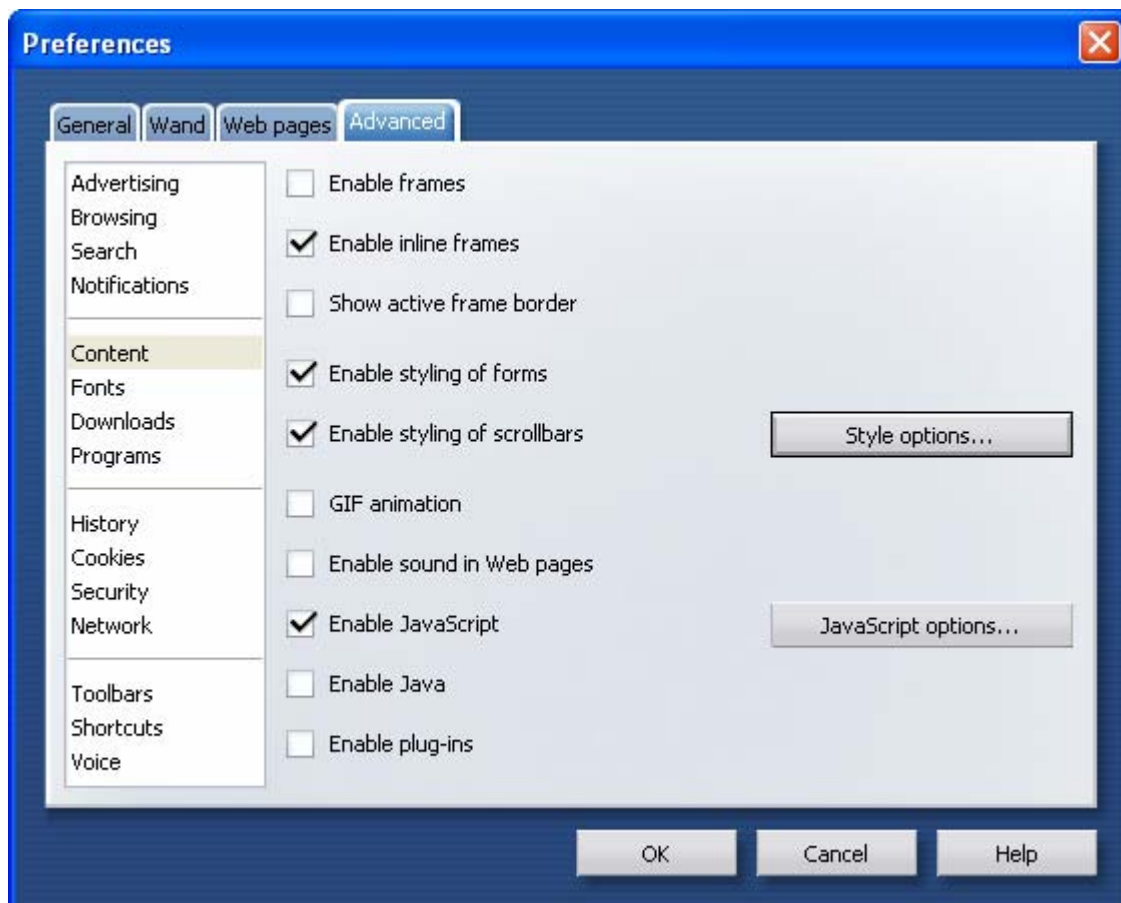
If SSL 3.0 is not enabled, a WWW page will appear with this error message:



3.2. Enabling JavaScript and other minimum settings

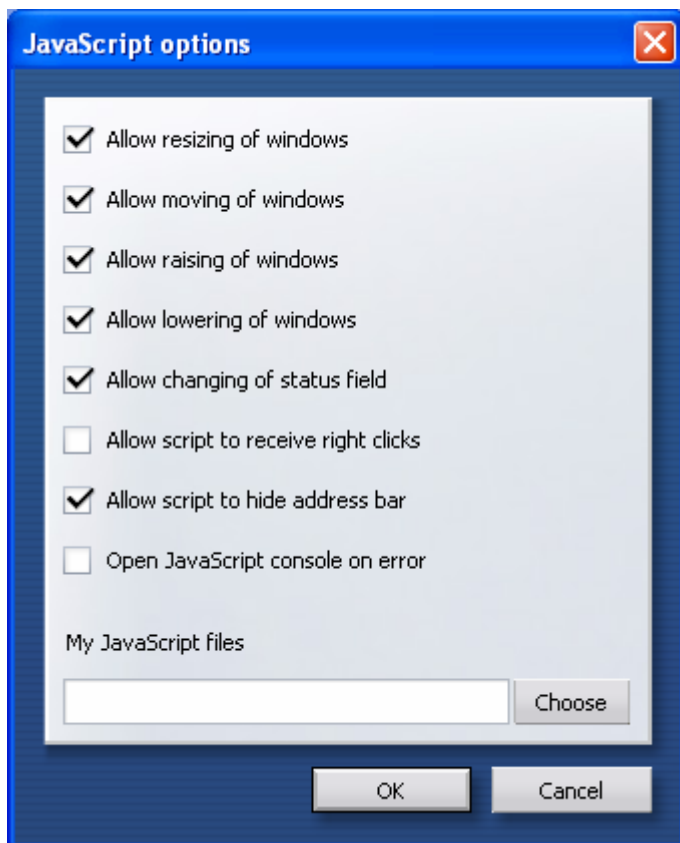
JavaScript must be allowed.

- 1) Menu Tools -> Preferences (or CTRL+F12)
- 2) Advanced - Content – for minimum settings, see the picture below



If „Enable inline frames“ is not ticked, help to individual commercial functions will not work.

3) Under the JavaScript options button



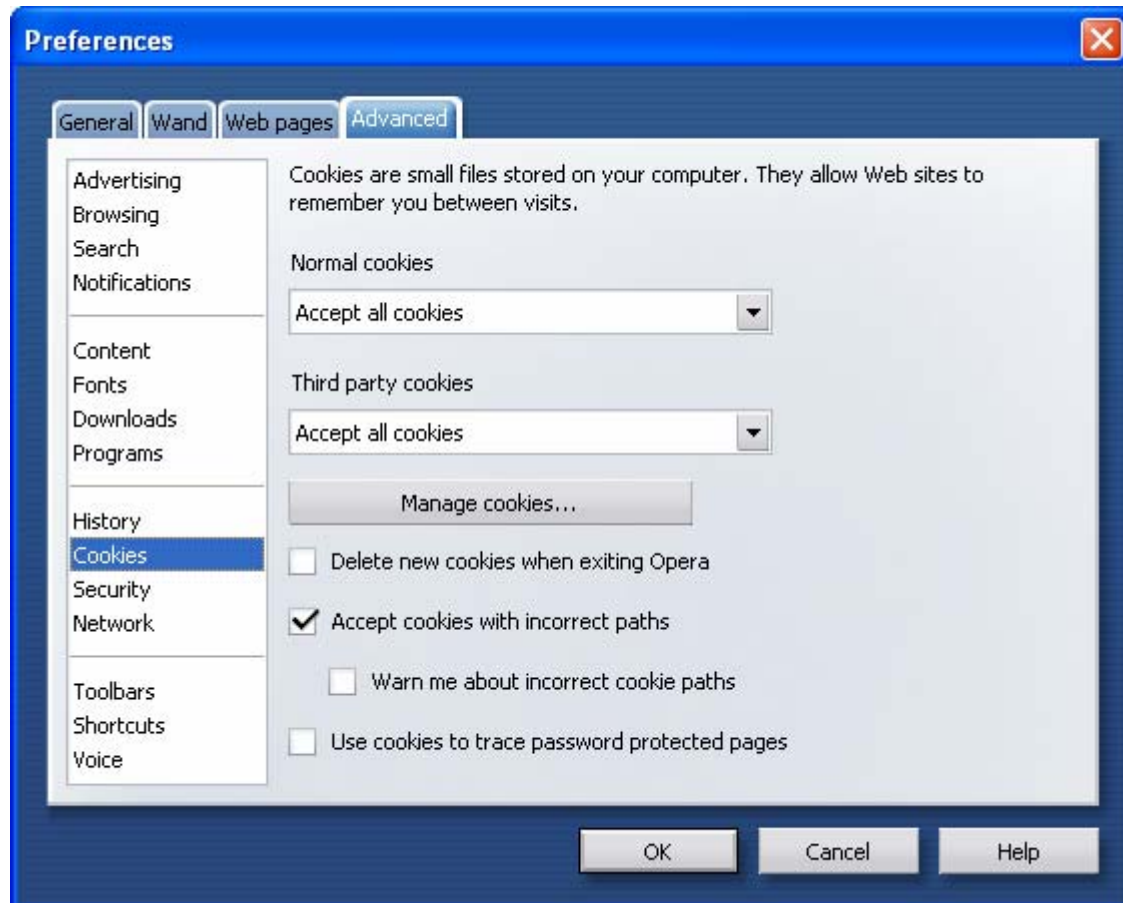
If JavaScript is not enabled, the user cannot be logged-in at all. After pressing the button on the log-in page, this page will remain displayed.

3.3. Cookies

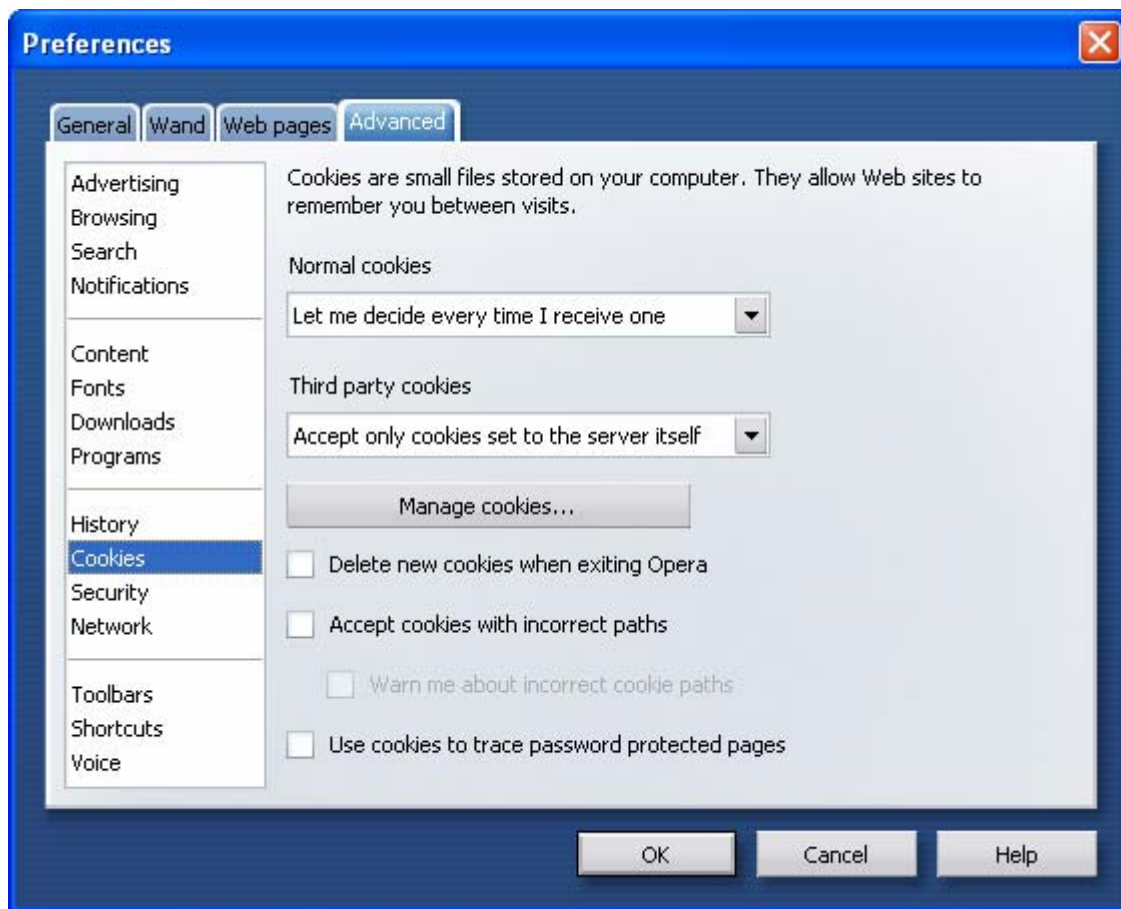
Cookies must be allowed.

- 1) Menu Tools -> Preferences (or CTRL+F12)
- 2) Advanced - Cookies

We recommend the following starting setting:



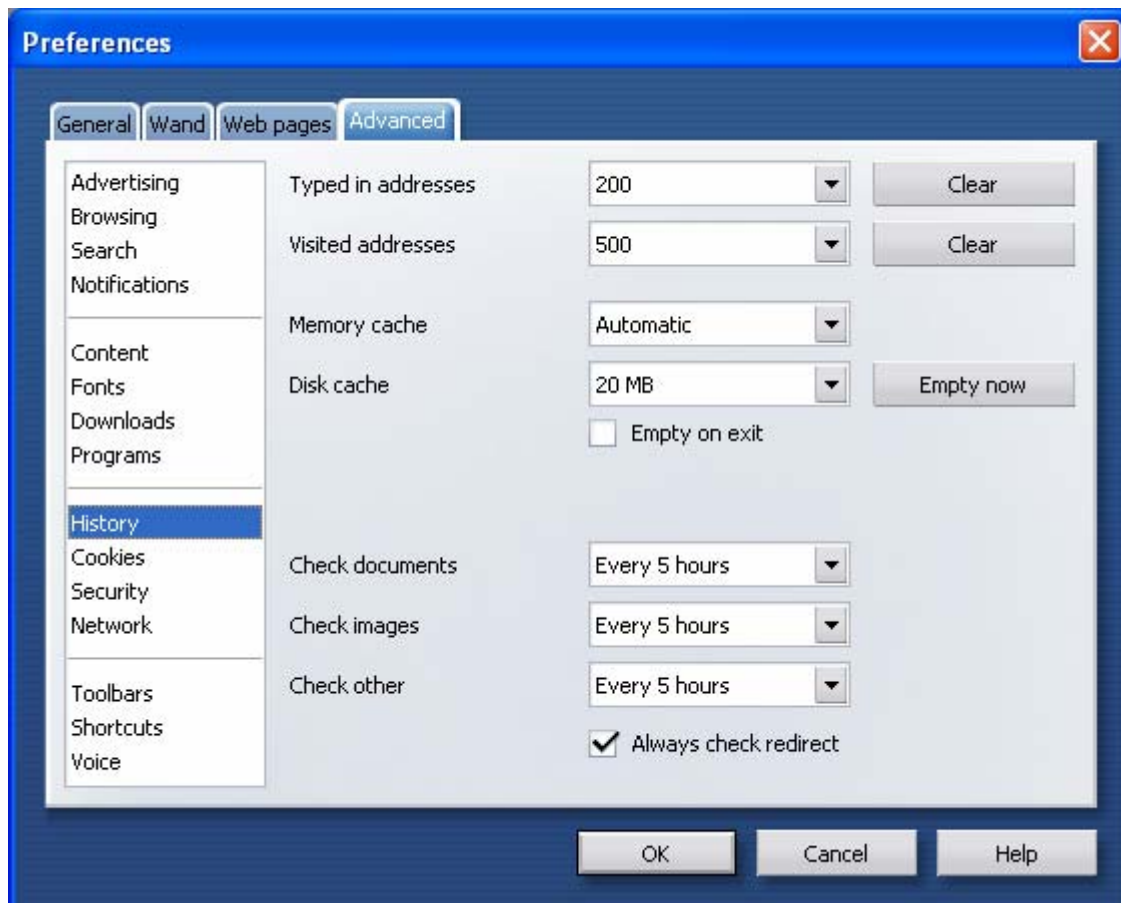
However, the following minimum setting will also work:



If cookies are not allowed, the user will immediately be redirected, after sending the identification number and PIN, to the introductory page (URL in the address line will then end as follows: `LoginForm.aspx?ReturnUrl=%2fDefault.aspx`).

3.4. Erasing cache

- 1) Menu Tools -> Preferences (or CTRL+F12)
- 2) Advanced - History – Disk cache -> Empty now -> OK
(However, this browser is not known to have any problems relating to cache, unlike other browsers.)



3.5. Identification of Opera

Although the starting setting of the browser after installation is „Identify as MSIE 6.0“, it also works problem-free in the regime „Identify as Opera“.

- 1) Menu Tools -> Preferences (or CTRL+F12)
- 2) Advanced - Network – Browser identification

