

Recommended MS Internet Explorer 7 and higher settings for ČSOB InternetBanking 24 with the SMS key

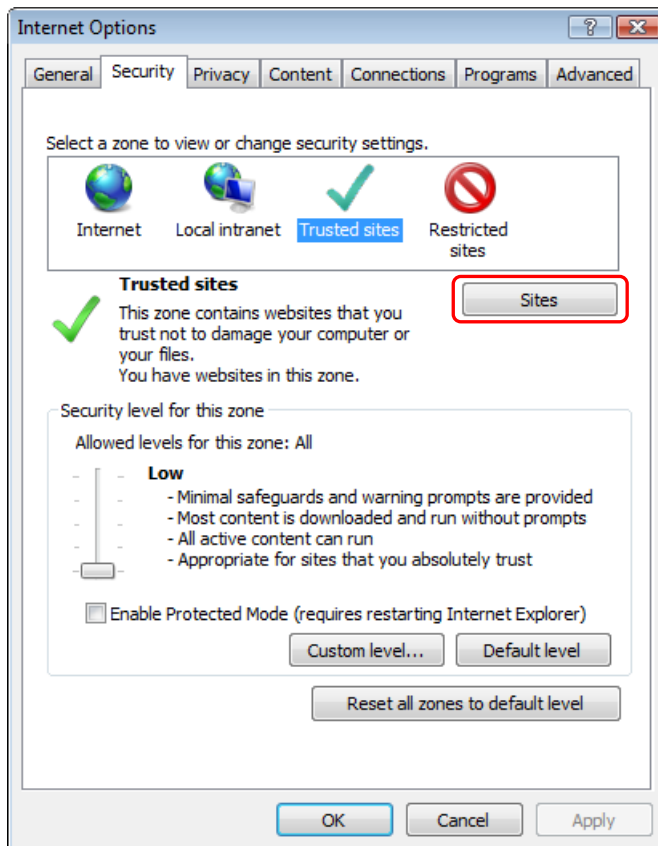
Contents

1. Setting the Internet Explorer 2
2. Testing the operation system, browser and other components..... 6

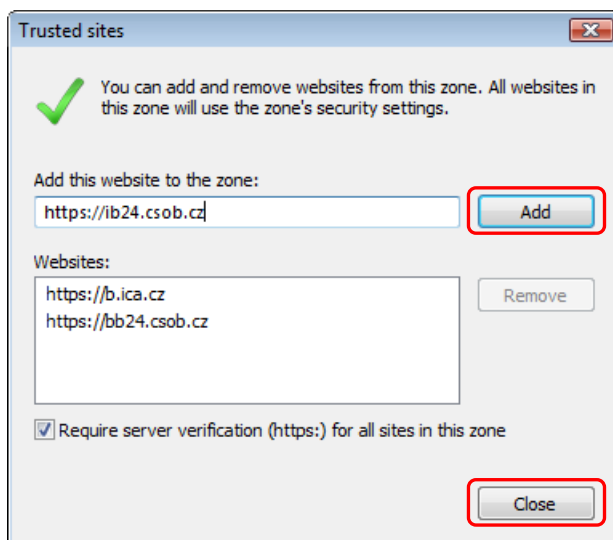
Note: The description below can be completed only by a user with administrator rights granted for the given computer.

1. Setting the Internet Explorer

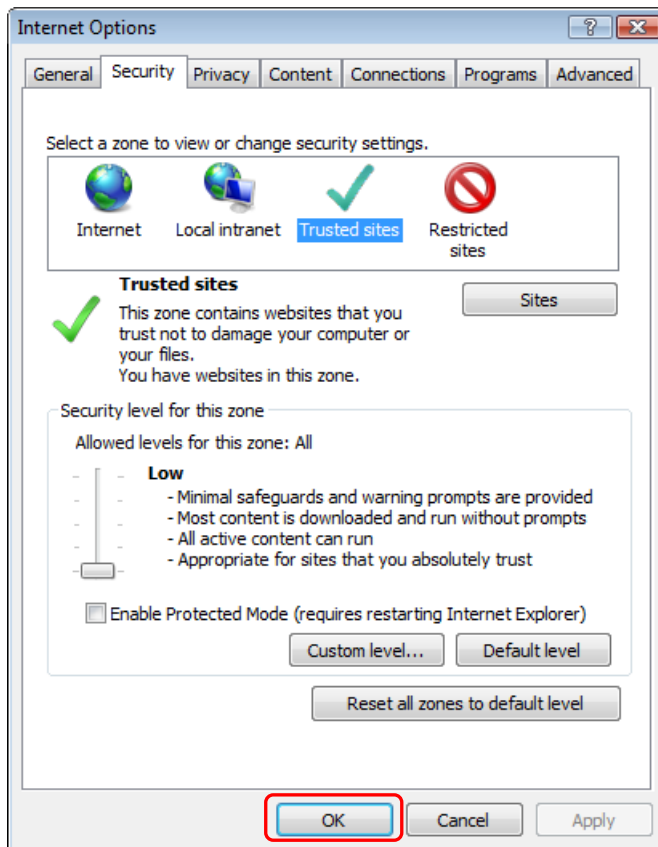
Start the browser and choose **Internet Options** in the **Tools** menu. When the Internet Options dialog opens select the Security tab and the option Trusted sites. Check (particularly in case of Windows Vista), that the protected mode is turned off. Then click on the button **Sites**.



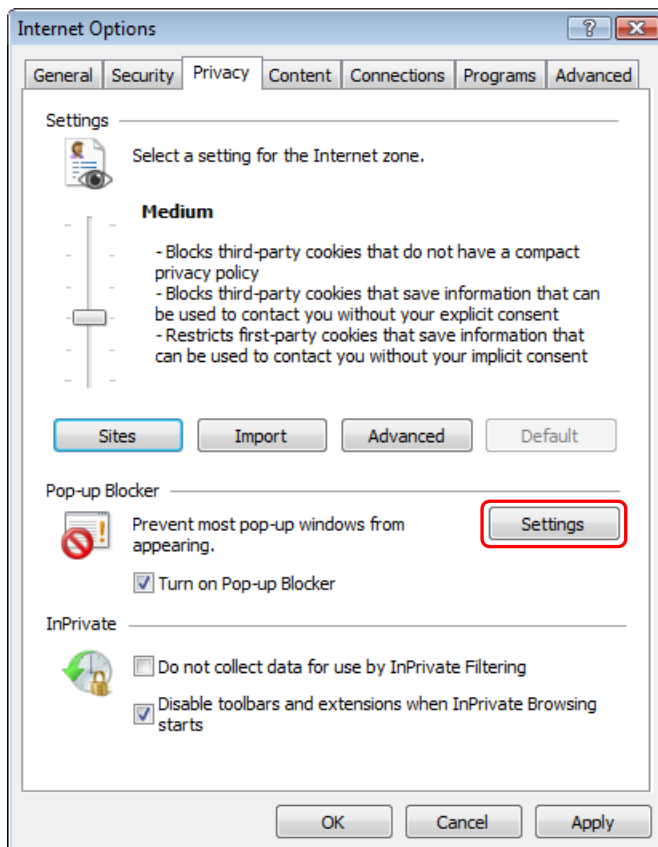
When the Trusted sites dialog opens add the address <https://ib24.csob.cz> (or <https://bb24.csob.cz> and <https://b.ica.cz> to trusted sites. Write the address to the line field and add it by pressing the **Add** button. Finally, confirm your choice by the **Close** button.



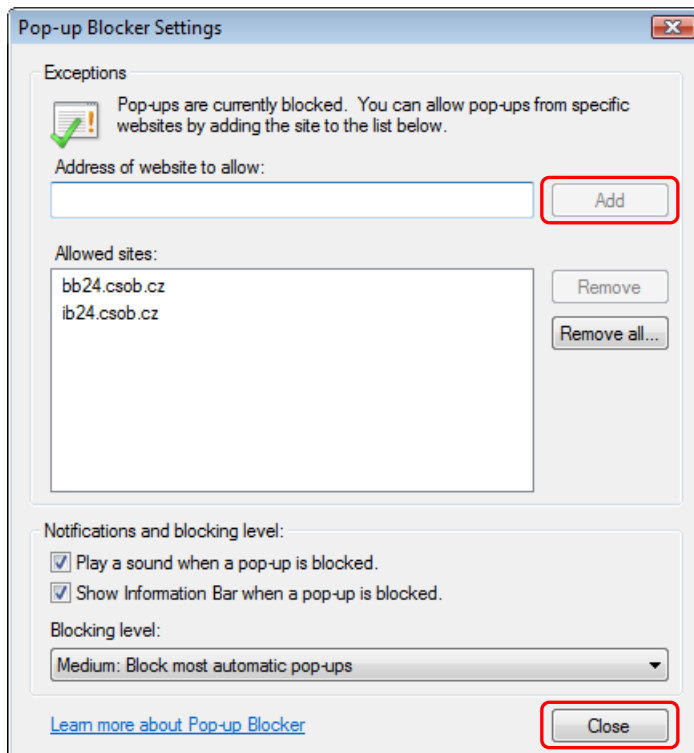
After returning to the dialog **Internet Options**, go to **Security** tab, choose **Trusted sites** and press **Default level**. Set the level to **Low** and confirm your settings by the **OK** button.



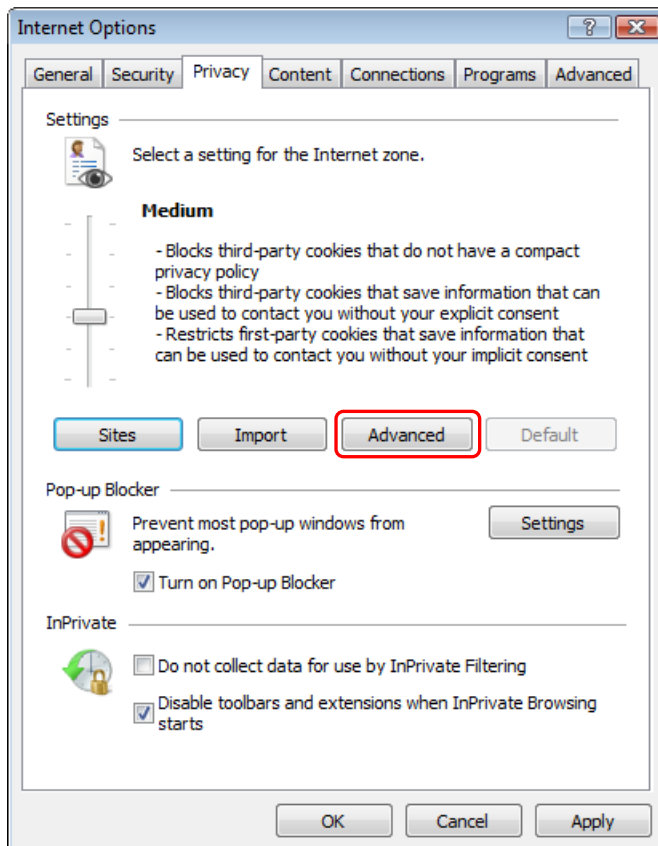
In the **Internet Options**, select the **Privacy** tab and press **Settings**.



In the **Pop-up Blocker Settings** dialog, add the <https://ib24.csob.cz> address to allowed sites and confirm by the **Close** button.



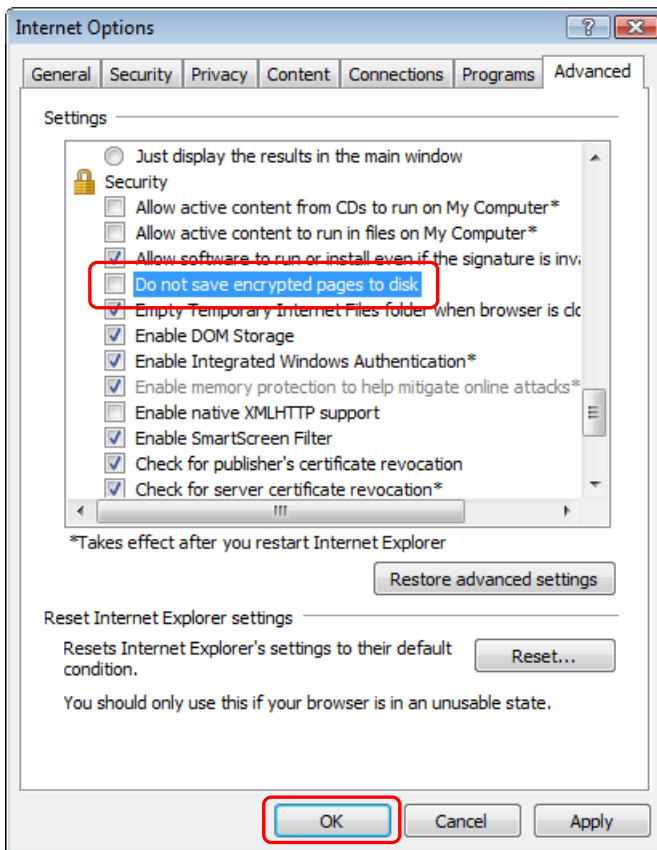
In the **Internet Options**, select the **Privacy** tab and press **Advanced**.



Confirm the Cookie settings as seen in the following picture and confirm by the **OK** button.



In the **Internet Options**, select the **Advanced** tab and check that the option **Do not save encrypted pages to disk** is not ticked; confirm by the **OK** button.



After setting the Internet Explorer successfully you have to close it and the changes will take effect only after restart.

2. Testing the operation system, browser and other components

Start Internet Explorer and enter the address <https://ib24.csob.cz> (or <https://bb24.csob.cz>). In the bottom status bar of the login page check that the address of web page is **Trusted server** and that **Protected mode is turned off**. On the login page, click on the link in the right top corner marked **Test of the system**. Use the test to check that your computer is correctly set for running the service. The test requires JAVA applet installed (without it only a part of the test will run)..

Helpdesk 844 111 124 15.10.2009 15:25:34

CSOB InternetBanking 24 You can arrange access to the service at your ČSOB branch, which maintains your accounts. More information is available at www.csob.cz.
If you do not carry out any operation in 20 minutes, the application will be logged off automatically.

Log-in [test of the system](#)

with Chip card
before log-in, put the card into the chip card reader
log-in
[The change of certificates for application](#)

With identification number and PIN
identification number
PIN
log-in

TIPS
You can find tutorial and manuals [here](#)
The principles for safe usage of ČSOB Internetbanking 24 service can be found [here](#)
If you are at your wits' end trying to log in to the new ČSOB Internet Nankiny 24, [here](#) here is the help

Updates

Main changes in payments from November
On November 1st, 2009 new Act No. 284/2009 Coll. of 4 September 2009, the Payment System Act will become effective. We wish to inform you in this way about the most significant impacts on providing banking services.

Payment orders abroad from 1. 11. 2009
Effective from 1. 11. 2009, payment orders to EU/EEA member states in their respective currencies will be subject to relevant SHARE charge code.

New wording of the ČSOB Business Terms and Conditions
We are going to update the ČSOB General Business Terms and Conditions and the Conditions for individual payment services from 1st November 2009.

Operating information

Important information for clients with chip cards - a new component ICASign (for Internet Explorer only)
We wish to inform you that on 15th October 2009 (ČSOB InternetBanking 24) and on 16th October 2009 (ČSOB BusinessBanking 24) we will implement a higher version of the component ICASign 1.7.0.3, which relates to amended legislation regarding the use of electronic certificates (logging-on and signing with a chip card). At the same time, it makes the work with the applications more comfortable.

This can be used to verify the functional state of individual ČSOB Electronic Banking services. (This information is only available in Czech).

© ČSOB, 2009 HelpdeskEB@csob.cz | Write to us | www.csob.cz Internet | Protected Mode: On

The initial page of the test will be displayed. Press the button **start test >>** to continue.

Helpdesk 844 111 124 14.1.2011 11:28:17

CSOB InternetBanking 24 You can arrange access to the service at your ČSOB branch, which maintains your accounts. More information is available at www.csob.cz.
If you do not carry out any operation in 20 minutes, the application will be logged off automatically.

Log-in ? help

with chip card
before log-in, put the card into the chip card reader

log-in

[The change of certificates for application](#)

With identification number and PIN

identification number

PIN

log-in

TIPS

You can find tutorial and manuals [here](#)

The principles for safe usage of CSOB Internetbanking 24 service can be found [here](#)

If you are at your wits' end trying to log in to the new CSOB Internet Banking 24, [here](#) is the help

Test of the system

You are here: **Introduction** JS Java OS Browser Resolution Cookies Session ActiveX Manager USB Signature Result

The test will find out whether your computer meets the requirements for CSOB Internet banking for the following parameters:

1. **JavaScript** (if your browser allows its use including the settings).
2. **Java** (recommended for the use of the chip card: Java 1.6 or higher).
3. **Operation system** (recommended: Windows XP SP3, Windows Vista and Windows 7).
4. **Web browser** (recommended: Internet Explorer 7.0 or higher, Firefox 1.5 or higher and Opera 10).
5. **Monitor resolution** (recommended: 1024 x 768 points or higher).
6. **Cookies** (must be allowed).
7. **Opening of session** (must be allowed).
8. **ActiveX** (for electronic signature verification in Internet Explorer).
9. **Chip Card Manager** (SW suitable for chip card management must be installed).
10. **USB ports** (must be functional for chip card usage).
11. **Electronic signature** I want to test (you must insert the chip card into the reader).

Without the Java application some tests may be skipped ([download Java](#)).

start test >> previous

After going through all steps of the test the result will be displayed. In case it complies with the requirements you can return back to login page by pressing **end test >> button** and start using the service.

In the case the result is incorrect in any of the points you have to change the respective settings using the display instructions. Exceptions include ActiveX test, chip card manager and electronic signature. These tests are only designed to test the chip card.

Log-in
help export to

with chip card
before log-in, put the card into the chip card reader

log-in

[The change of certificates for application](#)

With identification number and PIN

identification number

PIN

log-in

Test of the system

You are here: [Introduction](#) [JS](#) [Java](#) [OS](#) [Browser](#) [Resolution](#) [Cookies](#) [Session](#) [ActiveX](#) [Manager](#) [USB](#) [Signature](#) **Result**

JavaScript	correspond to requirements
Java	correspond to requirements
operating system	correspond to requirements
web browser	correspond to requirements
resolution of the screen	correspond to requirements
cookies	correspond to requirements
creation of a session	correspond to requirements
ActiveX	does not correspond to requirements (Enable ActiveX in your web browser to ensure correct functioning of your chip card)
chip card manager	does not correspond to requirements (Install SW suitable for chip card management - SecureStore)
USB ports	correspond to requirements
electronic signature	test was not executed

End test >>

previous

TIPS

You can find tutorial and manuals [here](#)

The principles for safe usage of CSOB InternetBanking 24 service can be found [here](#)

If you are at your wits' end trying to log in to the new CSOB Internet Banking 24, [here](#) is the help