

# Recommended Mozilla Firefox 3.6 and higher settings for ČSOB InternetBanking 24 with the SMS key

## Contents

1. Firefox Settings .....	2
2. Trouble Fixing .....	2
2.1. Allow SSL Communication .....	2
2.2. Enabling JavaScript and other minimum settings .....	3
2.3. Permitting Cookies .....	3
2.4. Clearing the Cache Memory (if necessary) .....	5
3. Testing the operation system, browser and other components.....	5

**Note:** The description below can be completed only by a user with administrator rights granted for the given computer.

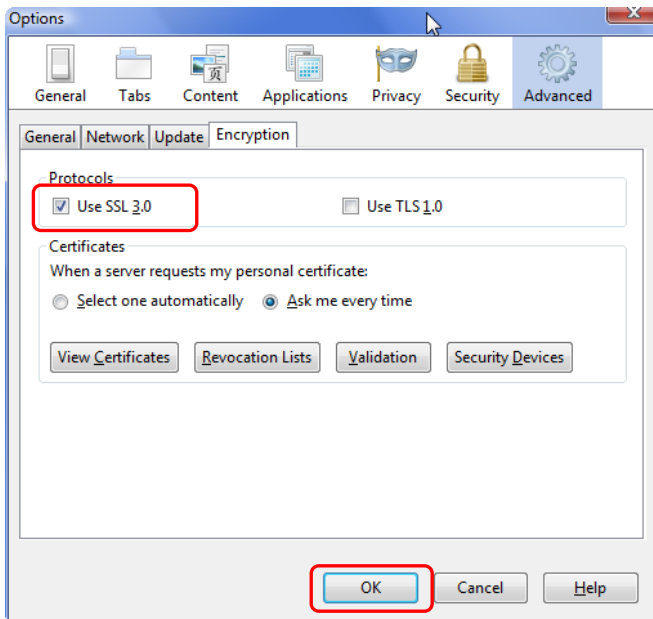
# 1. Firefox Settings

The initial browser settings are appropriate for ČSOB InternetBanking 24; therefore, there is no need to modify them.

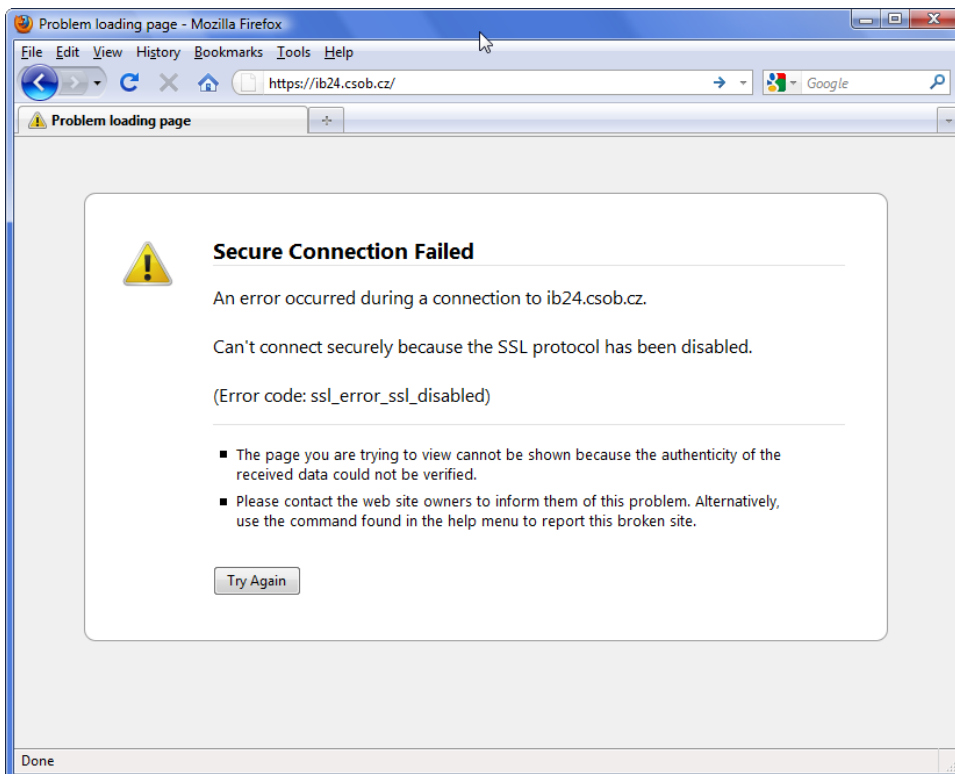
## 2. Trouble Fixing

### 2.1. Allow SSL Communication

In **Tools**, select **Options**. In the new window, select **Advanced**; tick **Use SSL 3.0** in **Encryption** and confirm by pressing **OK**.

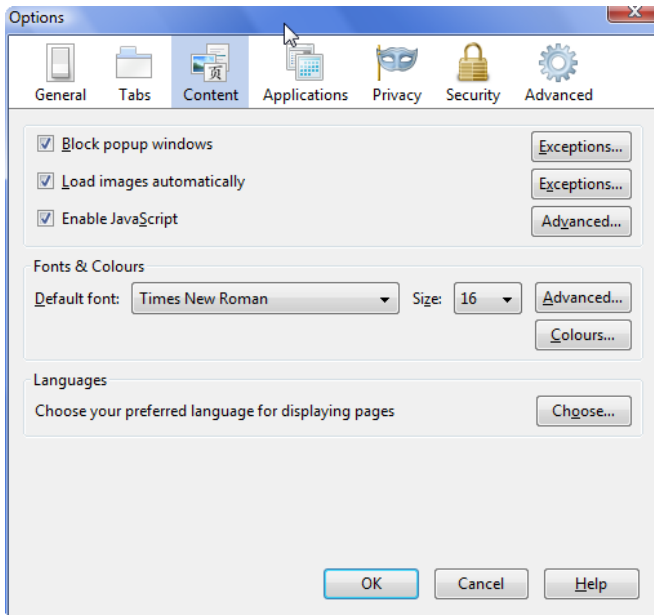


If SSL 3.0 communication is not permitted the following error message will appear.

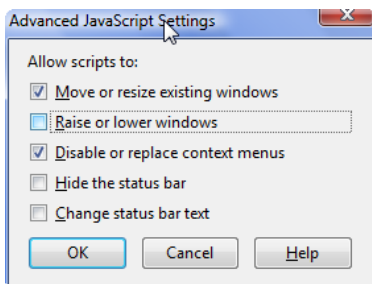


## 2.2. Enabling JavaScript and other minimum settings

Choose **Options** in the **Tools** menu. Select **Content** in the new window and set your options according to the figure.



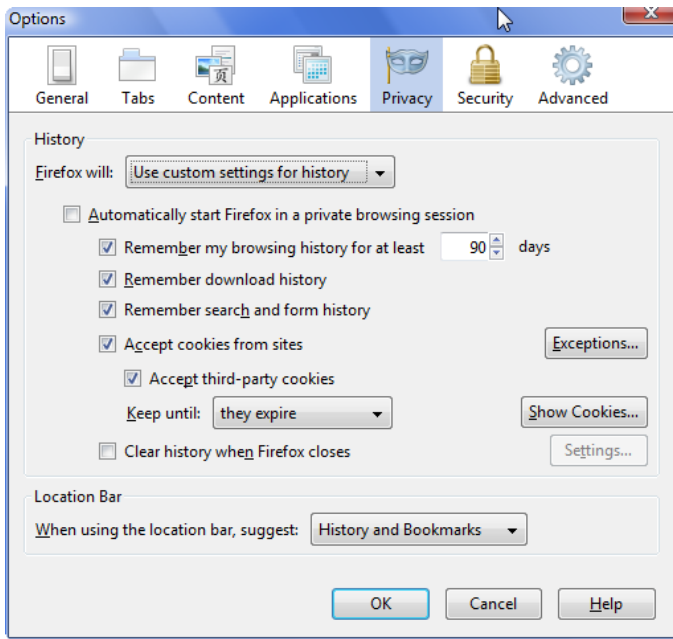
Then press **Advanced...**, set options according to the figure and confirm everything by pressing the **OK** button.



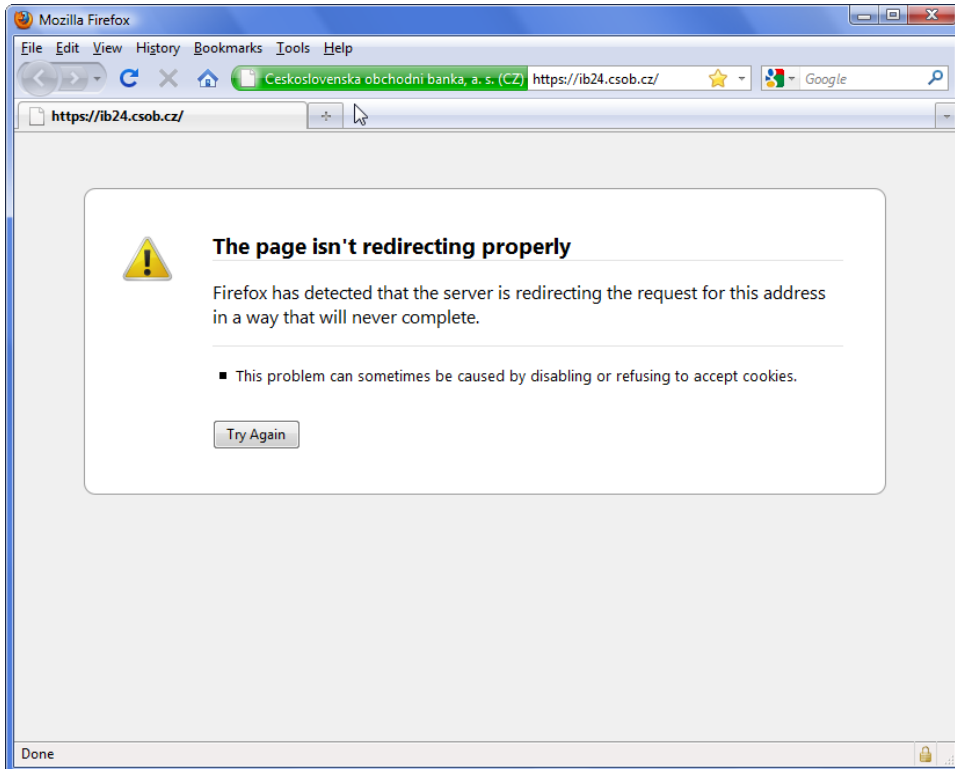
If JavaScript is not enabled you will not be able to log in (the log-in page will be displayed even when the log-in button has been pressed).

## 2.3. Permitting Cookies

Choose **Options** in the **Tools** menu. Select **Privacy** in the new window, set the options according to the figure and confirm by pressing **OK**.

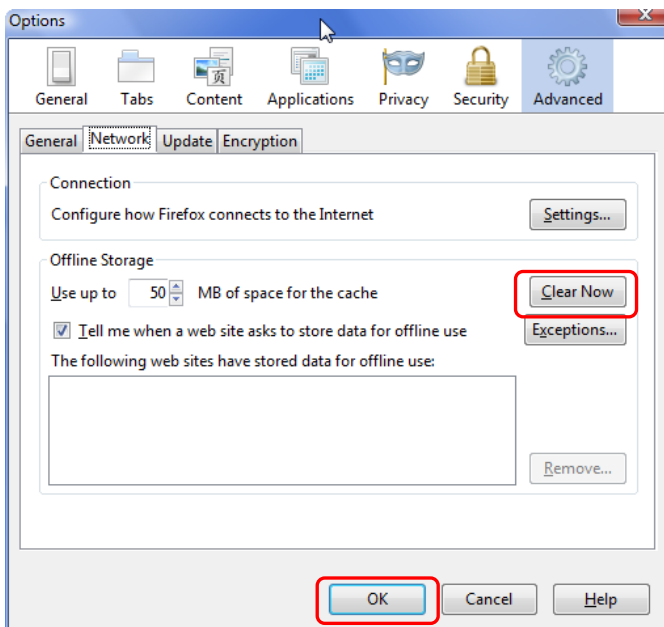


If cookies are not permitted you will not be able to log-in (you will be redirected to the introductory page after logging in with your ID number and PIN).



## 2.4. Clearing the Cache Memory (if necessary)

Choose **Options** in the **Tools** menu. Select **Advanced** in the new window, press **Clear** at the **Network** tab and confirm by pressing **OK**.



## 3. Testing the operation system, browser and other components

Start the browser and enter <https://ib24.csob.cz> (ČSOB InternetBanking 24), then click on **system test** in top right corner. Use the test to check that your computer is correctly set to run the service. The test requires JAVA applet installed (without it only a part of the test will run).

The initial screen of the test will appear. Do not tick the Electronic signature and continue with the **start test >>** button.

When all the test stages have been completed the result will be displayed. If this meets the requirements you can return to the introductory page by pressing **end test >> button** and start using the service.

If any item of the result is incorrect please modify the relevant settings according to the recommendations displayed.

Exceptions include ActiveX test, chip card manager and electronic signature. These tests are only designed to test the chip card.

Helpdesk 844 111 124 18.5.2011 11:58:05

**CSOB InternetBanking 24** You can arrange access to the service at your ČSOB branch, which maintains your accounts. More information is available at [www.csob.cz](http://www.csob.cz).  
If you do not carry out any operation in 20 minutes, the application will be logged off automatically.

**Log-in**

**with chip card**  
before log-in, put the card into the chip card reader  
**log-in**  
[The change of certificates for application](#)

**With identification number and PIN**  
identification number   
PIN   
**log-in**

**TIPS**  
You can find tutorial and manuals [here](#)  
The principles for safe usage of ČSOB Internetbanking 24 service can be found [here](#)  
If you are at your wits' end trying to log in to the new ČSOB Internet Banking 24, [here](#) is the help

**Test of the system**

You are here: [Introduction](#) [JS](#) [Java](#) [OS](#) [Browser](#) [Resolution](#) [Cookies](#) [Session](#) [ActiveX](#) [Manager](#) [USB](#) [Signature](#) **Result**

JavaScript	correspond to requirements
Java	correspond to requirements
operating system	correspond to requirements
web browser	correspond to requirements
resolution of the screen	correspond to requirements
cookies	correspond to requirements
creation of a session	correspond to requirements
ActiveX	does not correspond to requirements ( Enable ActiveX in your web browser to ensure correct functioning of your chip card )
chip card manager	correspond to requirements
USB ports	correspond to requirements
electronic signature	test was not executed

**End test >>** **previous**

© ČSOB, 2011 HelpdeskEB@csob.cz | Write to us | [www.csob.cz](http://www.csob.cz)