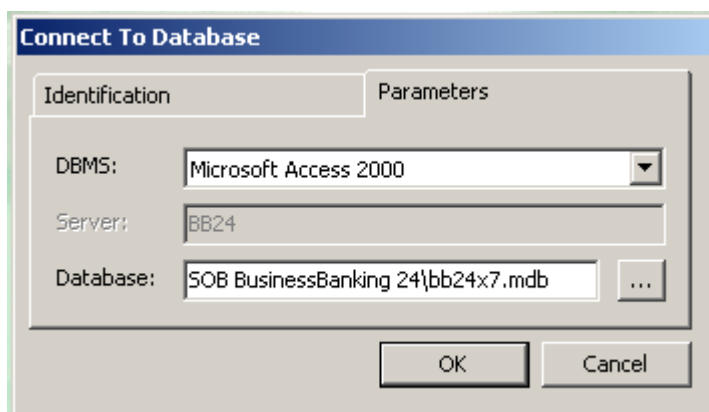


## ***How to upgrade to the new ČSOB BusinessBanking 24 application version***

***Note: As the new application version requires the operating system MS Windows 2000 or later, do not upgrade to the new version if you are using an older version of Windows- if you do so, the application will no longer function!***

***Recommendation: Before upgrading to the new version we recommend backing up (copying) the contents of the application's directory, which is located by default at C:\Program Files\CSOB BusinessBanking 24). You can then delete this backup after you have verified that the upgrade has been successful.***

1. Before upgrading it is necessary to ensure that no batch continues to be in the Partially Signed status: We check whether there is any batch in Batch Administration (Application menu – Batch Administration) in the “Partially Signed“ status. If it is the case we change it either to the “Signed“ status (i.e. we provide for the second signature) or to the “Cancelled“ status (i.e. we will press “Cancel“ button).
2. Close the ČSOB BusinessBanking 24 application.
3. Back up the database file **bb24\*7.mdb** by copying it to another directory or renaming it. The file is located by default at C:\Program Files\CSOB BusinessBanking 24\bb24x7.mdb. You can also determine the name and location of this file at the login screen (see the image).



4. To download the „CSOB\_upgrade.zip“ file, click on the „Upgrade“ reference item at the address <http://www.csob.cz/upgradeBB24>. Unpack the downloaded zipped file. Copy the files from the “Upgrade” directory to that in which the current version of the ČSOB BusinessBanking 24 application is installed.
5. Launch the ČSOB BusinessBanking 24 application using the same icons as before. When you first launch the new application version the database is adapted to the new version and this process can take several minutes. The result will be your current database converted into a database compatible with the new application version. We recommend using the converted database only with the new application version (i.e. after the upgrade).
6. Check whether you can log in to the new application version and whether all the application's basic functions work.

## *Sending and receiving data*

The latest application version provides new Sending and Receiving Data functionality. This allows you to send signed batches to the bank and receive data from the bank in a simplified way.

This function is described in the off-line manual, which has been updated. You can find it at the address:

<http://www.csob.cz/eb/clanek.asp?prmKod=EB25.25.20&a=0>

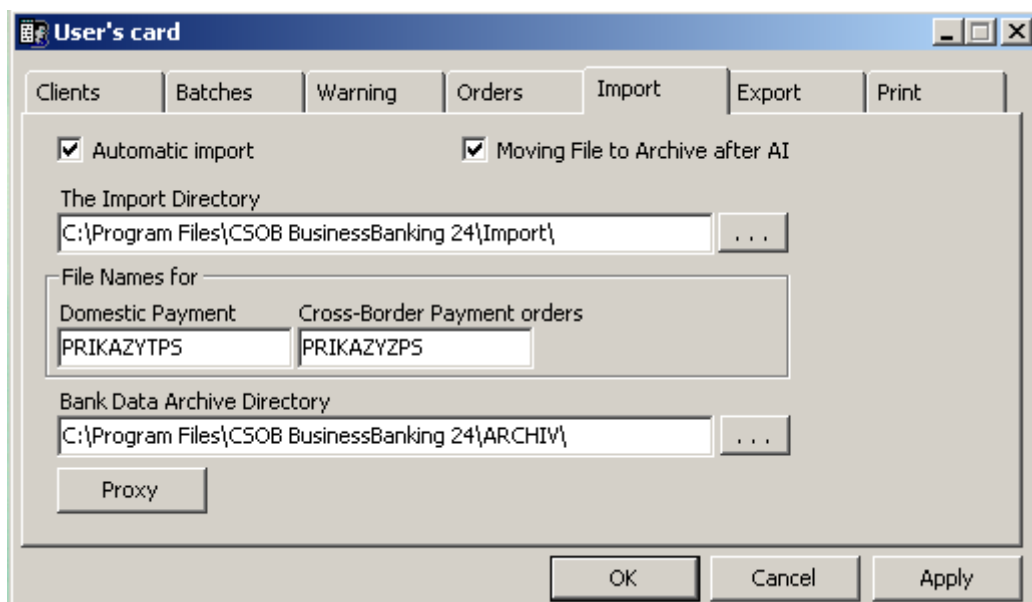
To be able to use the Sending and Receiving Data functionality, it is necessary that the station where the application is installed be correctly connected to the Internet network. The method of connection (e.g., dial-up, ADSL, cable, and the like) does not affect the use of this service. Proper connection to the Internet network must be carried out according to instructions given by the connection provider.

If you do not use a proxy server, it is no more necessary to set-up anything in the application. If you are using a proxy server, you should set up the user's Card as described in point 1 - Sending and receiving data using a proxy server connection.

In point 2, we show an example of a station's setting if a dial-up connection to the Internet is used.

### *1. Sending and receiving data using a proxy server connection*

If you connect to the internet via a proxy server, the application must be set up accordingly. This must be done for every workstation (individual PC).



The settings depend on the type of proxy server used:

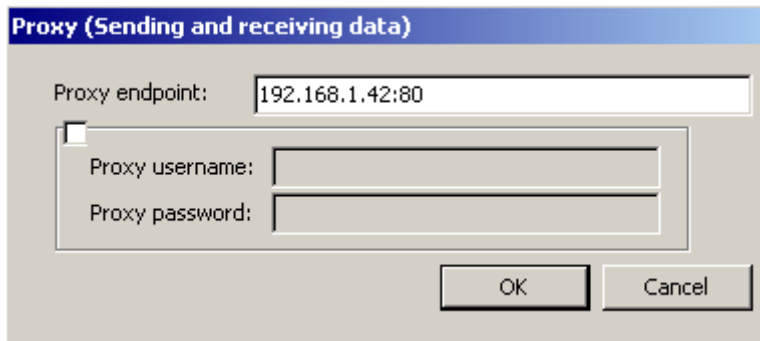
#### **a) Using a server without authentication**

E.g.: IP address of the proxy server = 192.168.1.42  
Port = 80

In this case you must enter the value 192.168.1.42:80 into the field.

The network administrator will inform you of these values; alternatively you can find them in your web browser settings.

Proxy setup screen



Proxy (Sending and receiving data)

Proxy endpoint: 192.168.1.42:80

Proxy username:

Proxy password:

OK Cancel

### **b) Using a proxy server with basic type authentication (using a name and password)**

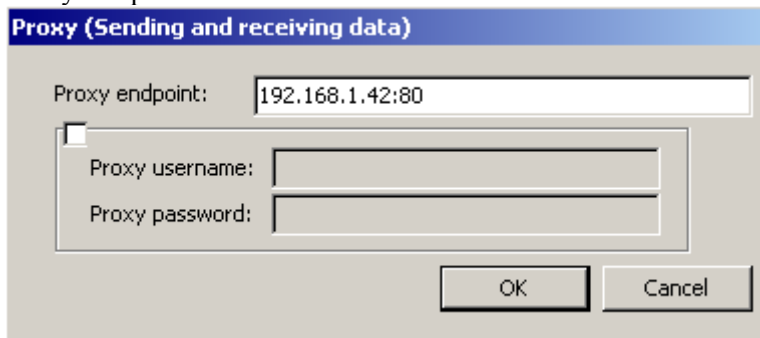
Ticking the tick box allows you to enter the Proxy username and Proxy password.

E.g.: IP address of the proxy server = 192.168.1.42  
Port = 80

In this case you need to enter the value 192.168.1.42:80.

The network administrator will inform you of these values; alternatively you can find them in your web browser settings.

Proxy setup screen



Proxy (Sending and receiving data)

Proxy endpoint: 192.168.1.42:80

Proxy username:

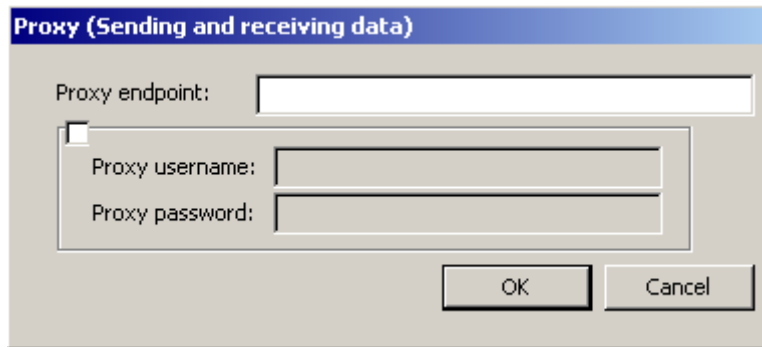
Proxy password:

OK Cancel

### **c) Using a proxy server with NTLM authentication (Windows Integrated)**

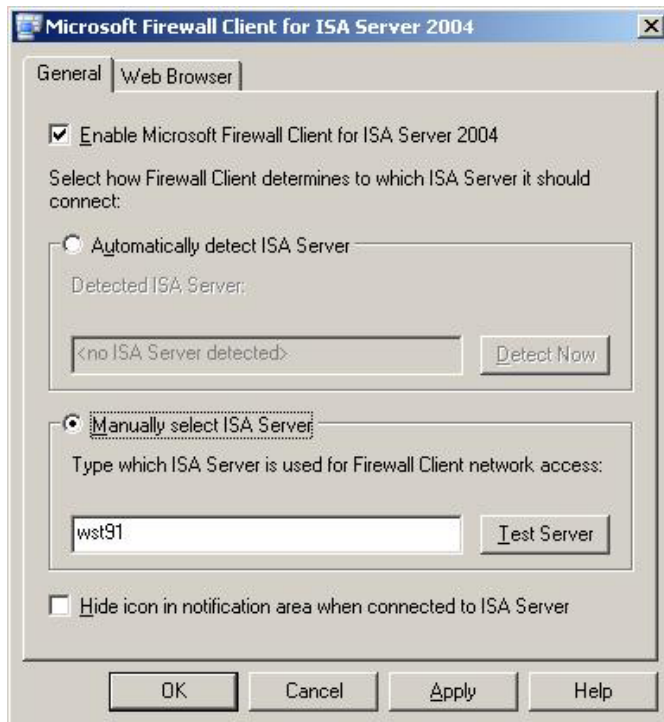
In this case do not fill in anything.

Proxy setup screen



At the client workstation where the ČSOB BusinessBanking 24 application with the “Sending and Receiving Data” function will be used, the Microsoft Firewall client for ISA Server must be installed and set up to enable access via the proxy server used with NTLM authentication or the IP address.

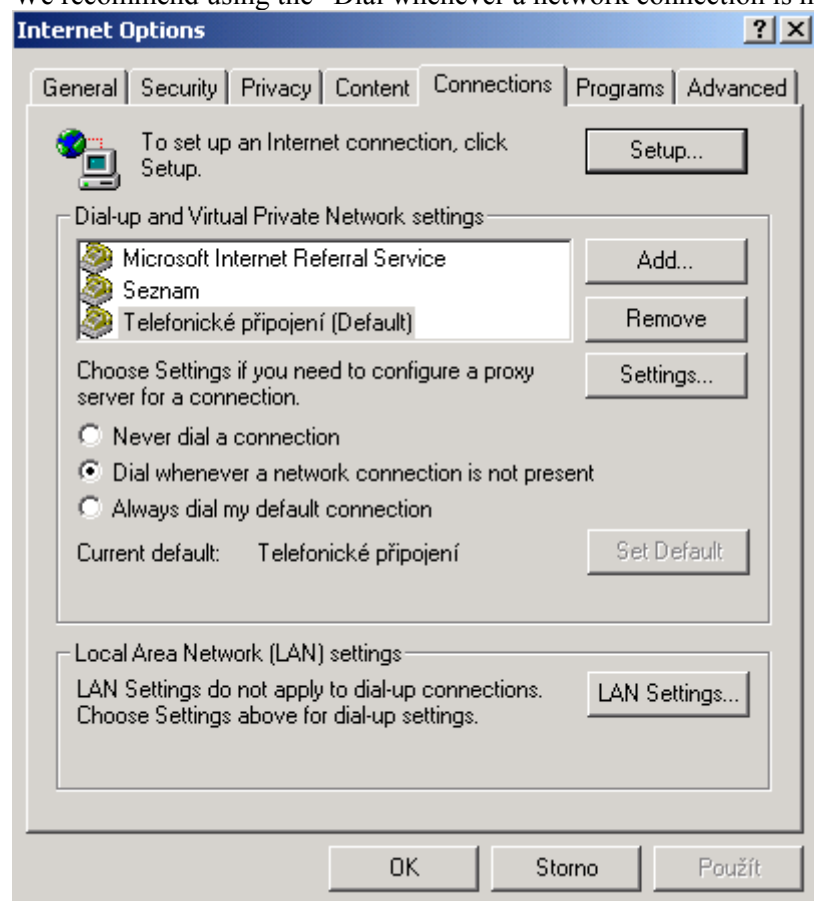
Illustration image (with the WST91 proxy server address as an example)



## ***2. Setting up the station if you use a dial-up internet connection through a modem***

In order to use the “Sending and Receiving Data” function in the ČSOB BusinessBanking 24 application you need the correct settings for your internet connection through the modem. This should be carried out according to the information provided by your internet connection provider.

We recommend using the “Dial whenever a network connection is not present” setting.



This setting (“Dial whenever a network connection is not present”) allows the ČSOB BusinessBanking 24 application to offer connection to the internet when using the “Sending and Receiving Data” function (Send, Send and Receive, Receive) off-line if the internet connection is not active at that time. The internet connection window will appear and the user can fill in the required items and continue by pressing “Dial”.

**Connect Volny** [?] [X]



User name:

Password:

Save this user name and password for the following users:

- Me only
- An anyone who uses this computer

Dial:  [v]